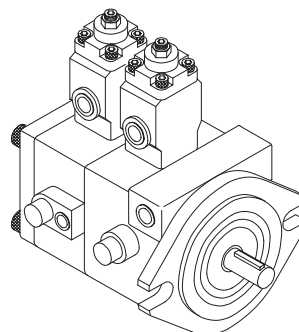
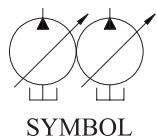


**VPKCCF12.12**  
**VPKCCF15.15**  
**VPKCCF20.20**



### ORDERING CODE 訂購指引

**VPKCC- F\*\*A\*A\*-01-A**

①

②③④ ⑤ ⑥ ⑦ ⑧

**Net Weight:9.5Kg**

- ①—— Series Number  
Double Pump
- ②—— Flange Type
- ③—— Output Flow  
Shaft End Pump at 1800rpm  
12,15,20 ( ℓ /min )
- ④—— Output Flow  
Cover End Pump at 1800rpm  
12,15,20 ( ℓ /min )
- ⑤—— Pressure Range  
of Shaft End Pump (P1)  
1:5-18    2:15-35  
3:30-55    4:50-70 ( Kg/cm<sup>2</sup> )
- ⑥—— Pressure Range  
of Cover End Pump (P2)  
1:5-18    2:15-35  
3:30-55    4:50-70 ( Kg/cm<sup>2</sup> )
- ⑦—— Shaft Type
- ⑧—— Type of Suction Port & Discharge Port  
A or No Marking: PT  
B: NPT  
C: SAE  
D: BSP

### VPKCCF2020

