

## 基本規格 SPECIFICATIONS

MSC-03 Series			
最大工作壓力 Maximum Pressure	bar	210 (3000 PSI)	
最大流量 Maximum Flow	LPM	60 (16.00 GPM)	
重量 Weight	型式 Code A, B	Kgs	3.1 (6.9 Lbs)
	型式 Code W	Kgs	3.4 (7.5 Lbs)
液壓油品 Fluid Type	礦物性、耐磨性 Mineral, Anti-Wear		
黏度範圍 Viscosity	cSt	10 ~ 400 (59 ~ 1854 SSU)	
使用溫度 Operating Temperature	°C	-15 ~ 70 (-5 ~ 158°F)	
清潔度 Contamination Level	$\beta_{10} \geq 75$ , NAS 12 級以內 Under NAS Class 12, 25 $\mu$		
表面處理 Surface Treatment	磷酸鹽皮膜處理 Zinc Phosphate Compound		

## 型號說明 HOW TO ORDER

### MSC - 03 W - 24 DG - NC - 30

① ② ③ ④ ⑤ ⑥ ⑦

#### ① 閥系列 VALVE SERIES:

MSC= 疊加式電磁控制單向止逆閥  
 Modular Solenoid  
 Operated Check Valve

#### ② 通稱口徑

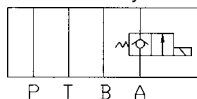
#### SUBPLATE MOUNTING SIZE:

03= 通稱 Nominal 3/8" (9 mm)  
 ISO CETOP5  
 DIN NG 10  
 NFPA D05

#### ③ 控制迴路 CONTROL PORT(S)

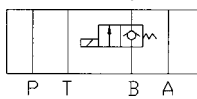
A= A 迴路控制

A Port Only



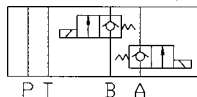
B= B 迴路控制

B Port Only



W= A 和 B 迴路控制

A & B Port Only



#### ④ 線圈電壓 COIL VOLTAGE

12: 12 VDC  
 24: 24 VDC  
 115: 115 VAC  
 230: 230 VAC

#### ⑤ 接線方式 WIRING

AG: 交流插式接線式 DIN 43650  
 AP: 交流纜線式 1/2 in. Conduit  
 DG: 直流插式接線式 DIN 43650  
 DL: 直流纜線式 Leadwires (2)

#### ⑥ NC= 常閉式 Normally Closed NO= 常開式 Normally Open

#### ⑦ 設計型號 DESIGN NO.

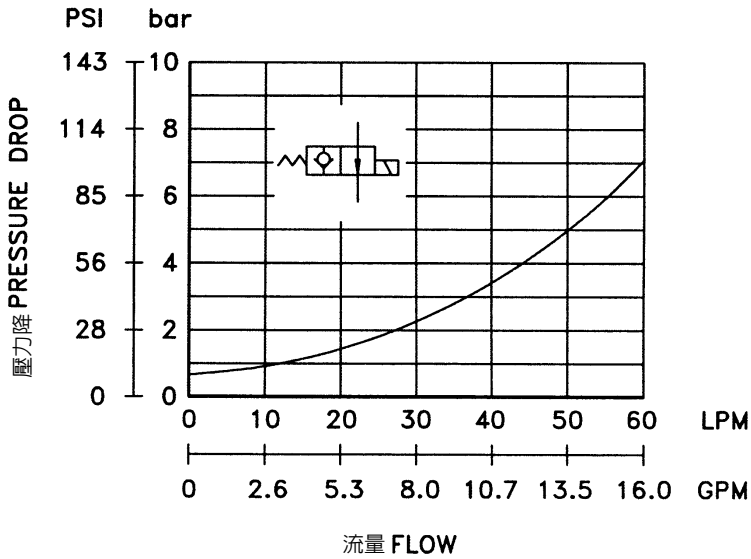
**特性曲線 PERFORMANCE**

測試條件 Test Conditions

溫度 Oil Temperature: 50°C (122°F)

黏度 Viscosity: 35 cSt (163 SSU)

**壓力降特性曲線 Pressure Drop**



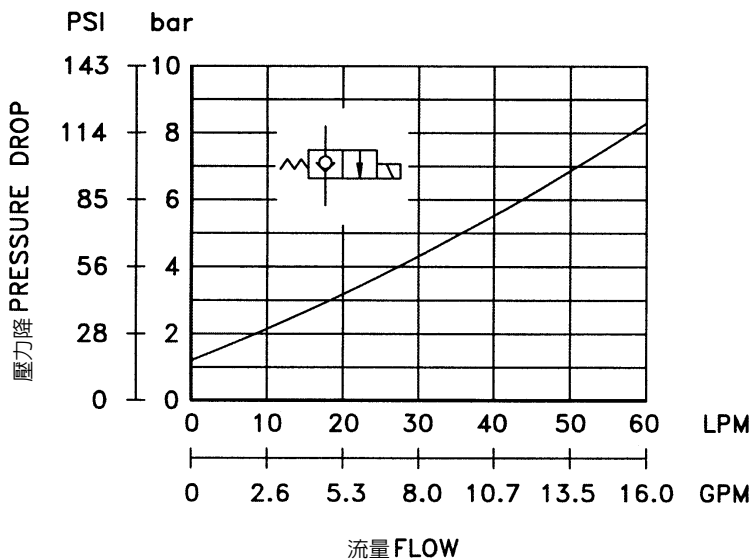
## 特性曲線 PERFORMANCE

測試條件 Test Conditions

溫度 Oil Temperature: 50°C (122°F)

黏度 Viscosity: 35 cSt (163 SSU)

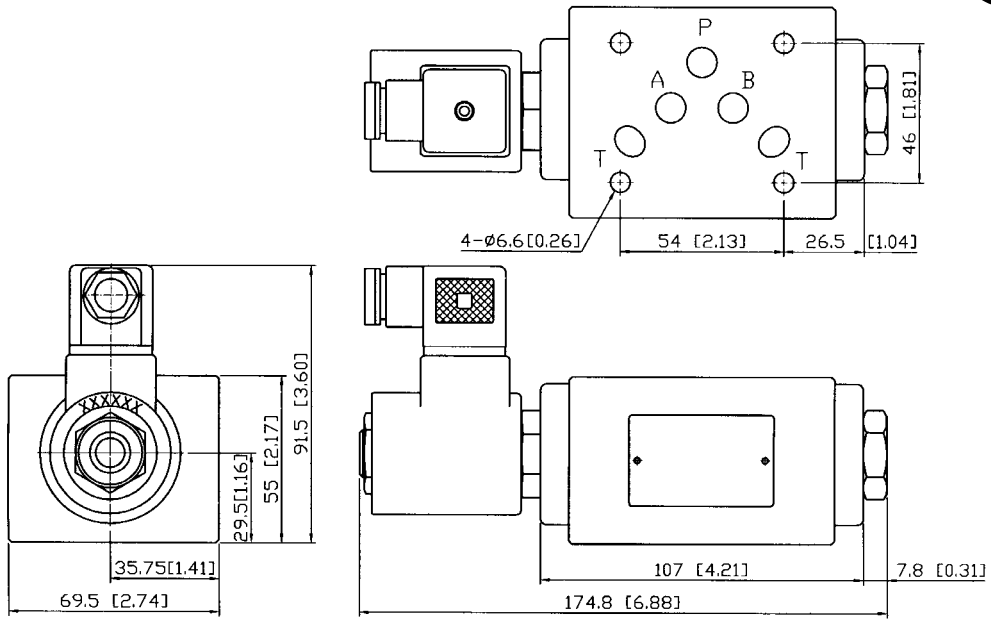
## 壓力降特性曲線 (自由流) Pressure Drop (Free Flow)



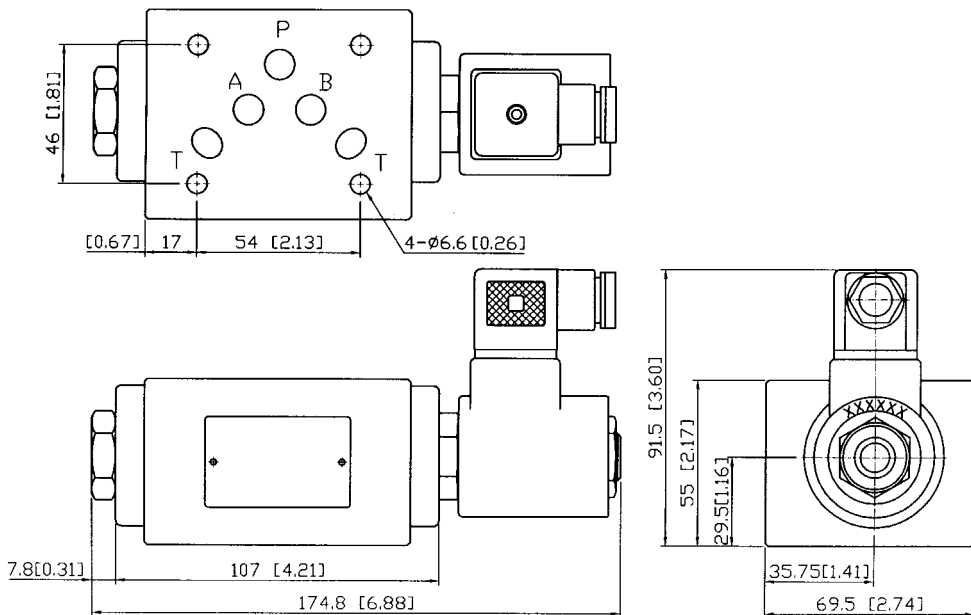
單位 Unit:mm[inch]

**外型尺寸 DIMENSIONS**

**MSC-03A**



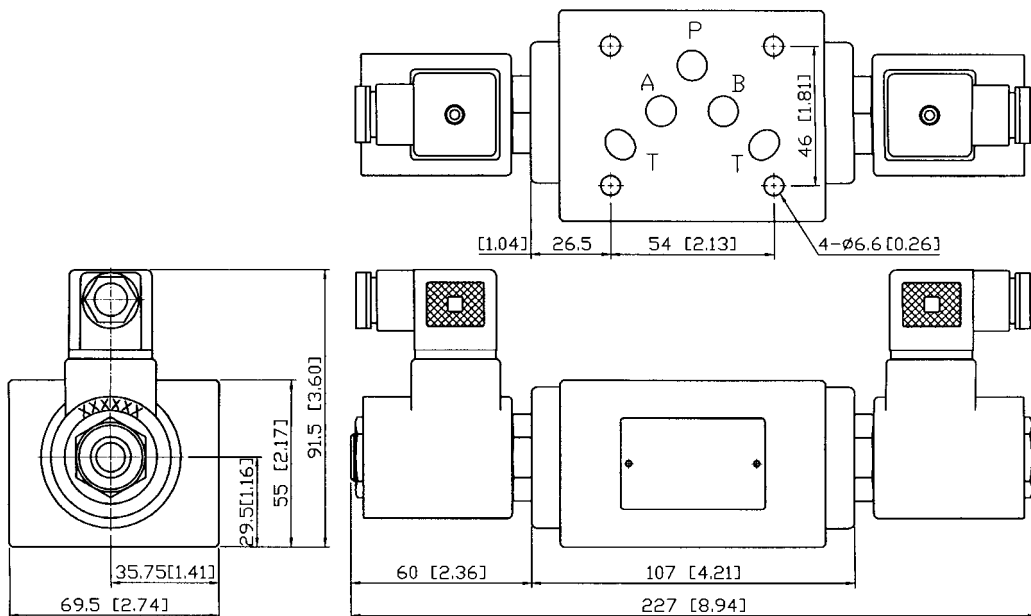
**MSC-03B**



單位 Unit:mm[inch]

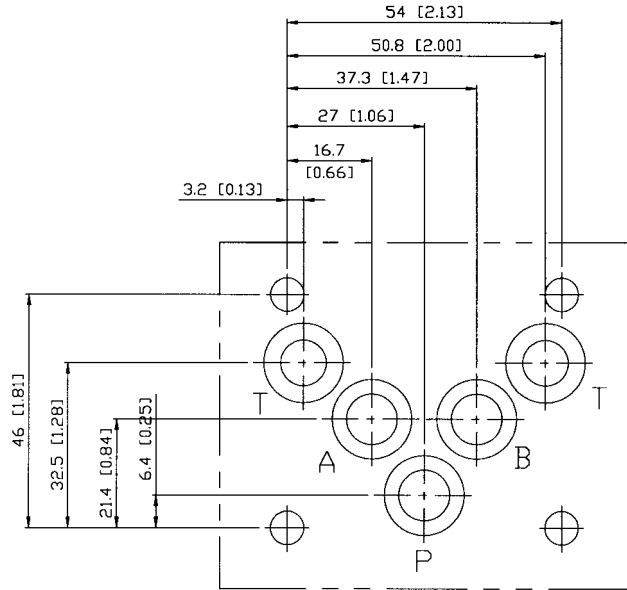
**外型尺寸 DIMENSIONS**

**MSC-03W**



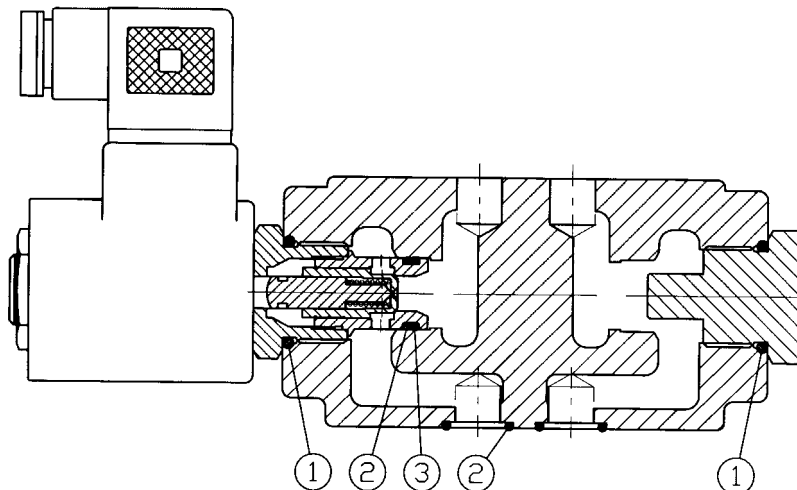
**按裝面 Mounting Interface :**

ISO 4401-AC-05-4-A



**密封件 SEAL KITS**

**MSC-03A-30**



No.	種類 Description	數量 Q'ty	型號 Specification
1	O 型環 O-ring	2	ARP-586-3-910
2	O 型環 O-ring	6	AS568-014 HS90
3	背托環 Back-up Ring	1	$\phi$ 13.2 × 1.45W × 1.24t HS70