

## 基本規格 SPECIFICATIONS

MPC-03 Series		
最大工作壓力 Maximum Pressure	bar	210 (3000 PSI)
最大流量 Maximum Flow	LPM	70 (18.50 GPM)
重量 Weight 型式 Code P, T, A, B	Kgs	3.4 (7.5 Lbs)
液壓油品 Fluid Type		礦物性、耐磨性 Mineral, Anti-Wear
黏度範圍 Viscosity	cSt	10 ~ 400 (59 ~ 1854 SSU)
使用溫度 Operating Temperature	°C	-15 ~ 70 (-5 ~ 158°F)
清潔度 Contamination Level		$\beta_{10} \geq 75$ , NAS 12 級以內 Under NAS Class 12, 25 $\mu$
表面處理 Surface Treatment		磷酸鹽皮膜處理 Zinc Phosphate Compound

## 型號說明 HOW TO ORDER

### MPC - 03 W - 40

- ① ② ③ ④

#### ① 閥系列 VALVE SERIES:

MPC= 疊加式導引止逆閥  
 Modular Pilot Operated Check Valve

#### ② 通稱口徑

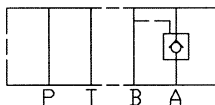
#### SUBPLATE MOUNTING SIZE:

02= 通稱 Nominal 1/4" (6 mm)  
 ISO CETOP3  
 DIN NG 6  
 NFPA D03

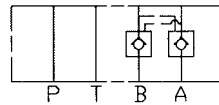
#### ③ 控制迴路 CONTROL PORT(S)

#### ④ 設計型號 DESIGN NO.

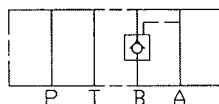
A= A 迴路控制  
 A Port Only



W= A 與 B 迴路  
 A & B Port



B= B 迴路控制  
 B Port Only



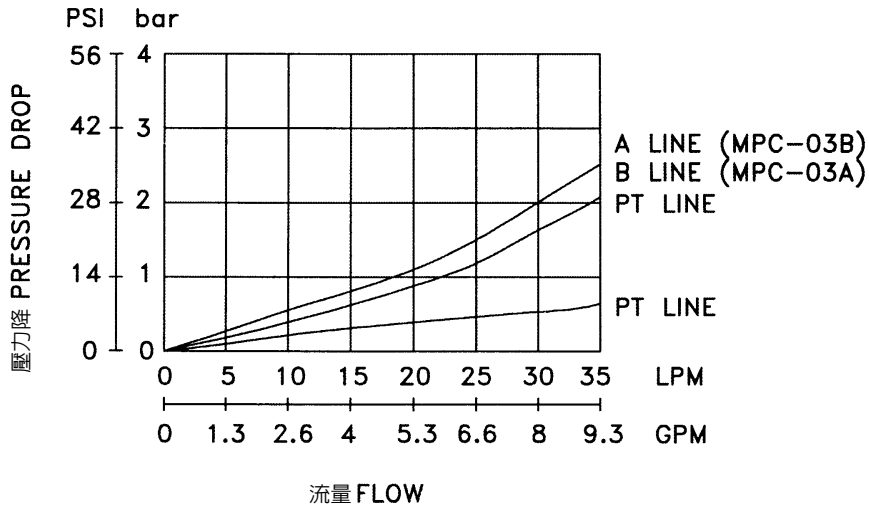
**特性曲線 PERFORMANCE**

測試條件 Test Conditions

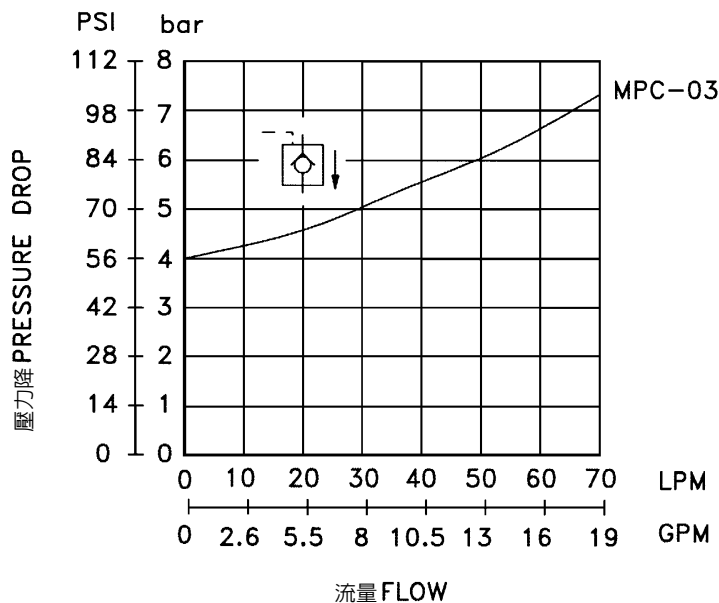
溫度 Oil Temperature: 50°C (122°F)

黏度 Viscosity: 35 cSt (163 SSU)

**壓力降特性曲線 Pressure Drop**



**壓力降特性曲線 (自由流) Pressure Drop (Free Flow)**



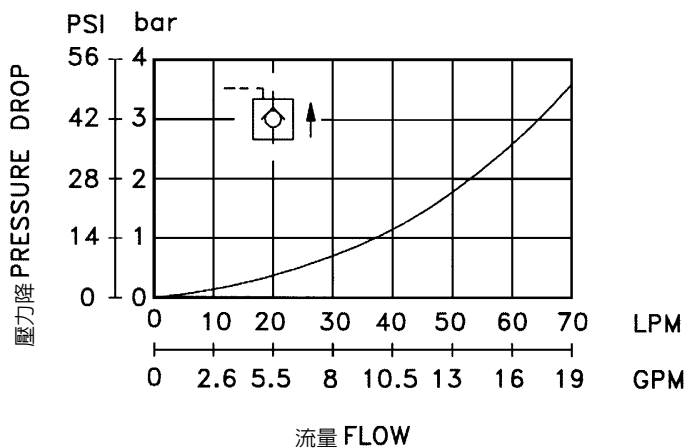
## 特性曲線 PERFORMANCE

測試條件 Test Conditions

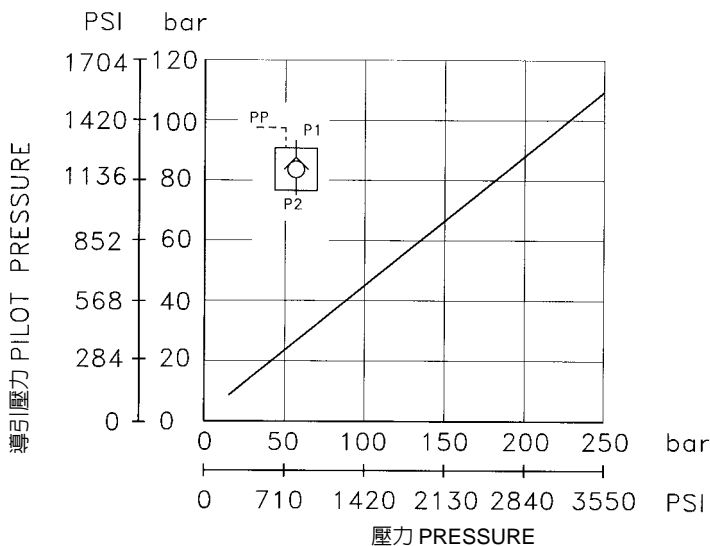
溫度 Oil Temperature: 50°C (122°F)

黏度 Viscosity: 35 cSt (163 SSU)

### (逆自由流) 壓力降特性 Pressure Drop (Reverse Controlled Flow)



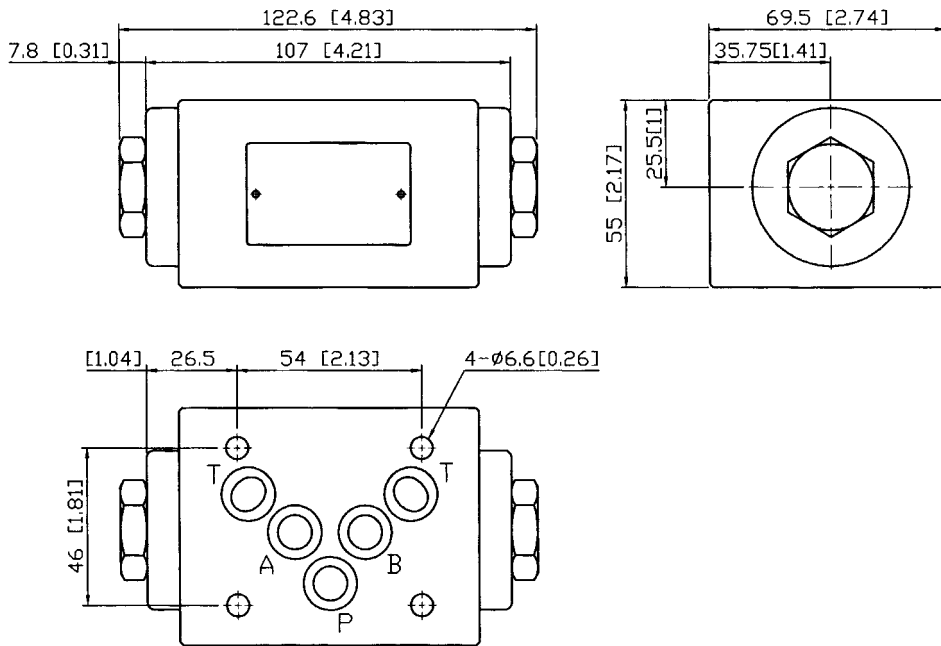
### 最低先導壓力特性 Minimum Pilot Pressure



單位 Unit:mm[inch]

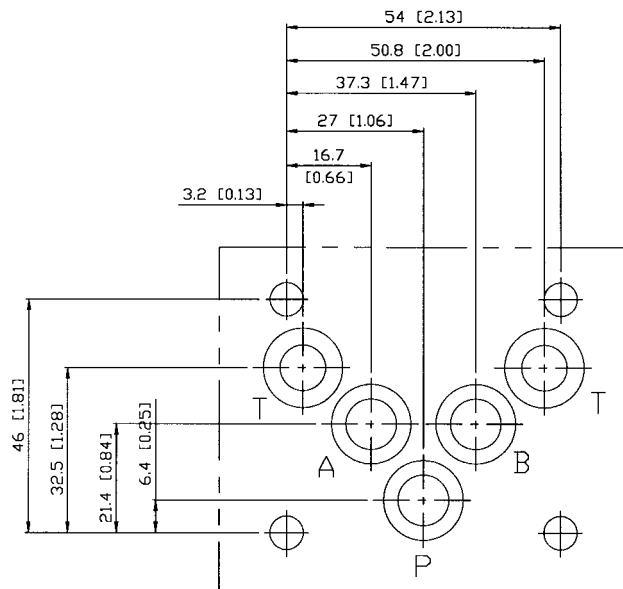
外型尺寸 DIMENSIONS

MPC-03W/A/B



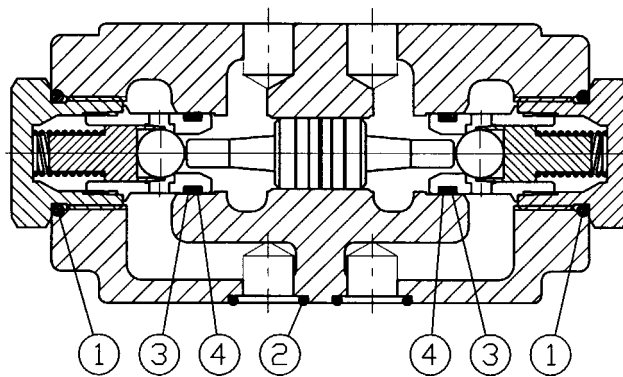
按裝面 Mounting Interface :

ISO 4401-AC-05-4-A



**密封件 SEAL KITS**

**MPC-03W**



No.	種類 Description	數量 Q'ty	型號 Specification
1	O 型環 O-ring	2	P20 HS90
2	O 型環 O-ring	5	AS568-014 HS90
3	O 型環 O-ring	2	AS568-014 HS90
4	背托環 Back-up Ring	1	P13-1.25T