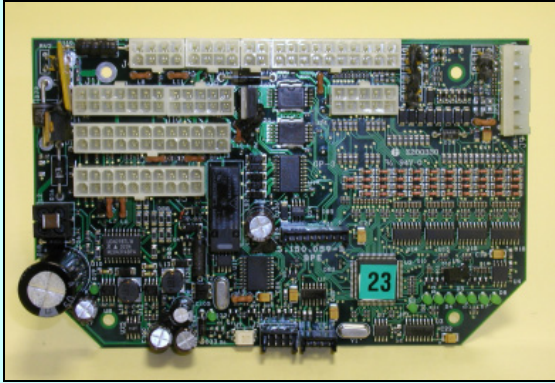


# Control and limitation

## LLD 900 M54 Series



### Description

Electronic board with microprocessor and CAN connection. Possesses great potential thanks to the large number of digital inputs and the variety of outputs available. Can be installed in a CAN system in order to control the machine in an integrated, functional way. It is equipped with autotest option for the logic functions, board functions and sensor wiring. Can be connected to amplified or potentiometric transducers.

Safety: Category 2 (EN 954-1).

### Technical data

Power supply	9 to 30 Vdc	-
Digital inputs	39	Impedence = 4.7 K $\Omega$
Analog inputs	nine 4 to 20 mA or 0.5 to 4.5 Vdc types	-
Digital outputs	7	I <sub>max</sub> = 40 mA. For the indicator led
ON/OFF power outputs	1 + 1	Positive, with protection against short-circuits. I <sub>max</sub> = 1 A; I <sub>max</sub> = 4 A
Power outputs in safety status	1 + 1	Positive, with protection against short circuits. I <sub>max</sub> = 1 A; I <sub>max</sub> = 4 A. Double actuation and double feedback. Cat. 2 (EN 954-1).
PWM power outputs	1	Positive, with protection against short-circuits. I <sub>max</sub> = 4 A
PWM power outputs in safety status	1	Positive, with protection against short-circuits. I <sub>max</sub> = 4 A. Double actuation and double feedback. Cat. 2 (EN 954-1).
Output for VPM display	Yes	-
CAN connection	Yes	-
Programming/check-control	RS-232	Via Psion™ or Personal Computer
Operating temperature	-20 to 70 °C	-
Standard protection grade	IP55	In BPE box measuring 192x168x79

### Dimensions [mm]

