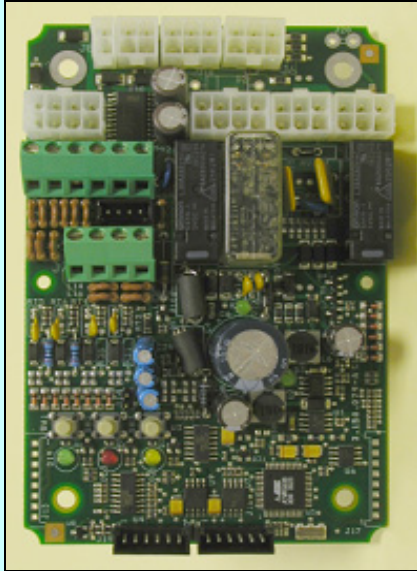




# Programmable moment or loading control

## LLD 300 M82 Series



### Description

- Used with pressure or extensimetric transducers
- Reset and delay time (optional) for returns after overloads (optional, Cat. 2 only)
- Self-calibration and emergency re-enabling push buttons (Cat. 2 only)
- Calibration via push buttons and LEDs on the board or via RS-232 with Psion™/PC
- Available for 12/24 Vdc power sources
- Check control through LEDs on board or via RS-232
- Digital outputs for alarm and pre-alarm signaling
- More alarm levels available
- Auto test for:
  - short circuit on power outputs
  - transducers open or in short circuit
- Zero check input
- Auto reset

### On request

- Working states data log
- Special functions

### Safety

Category 2 (EN 954-1) according to the following conditions:

- Automatic or manual zero check, function of the custom application

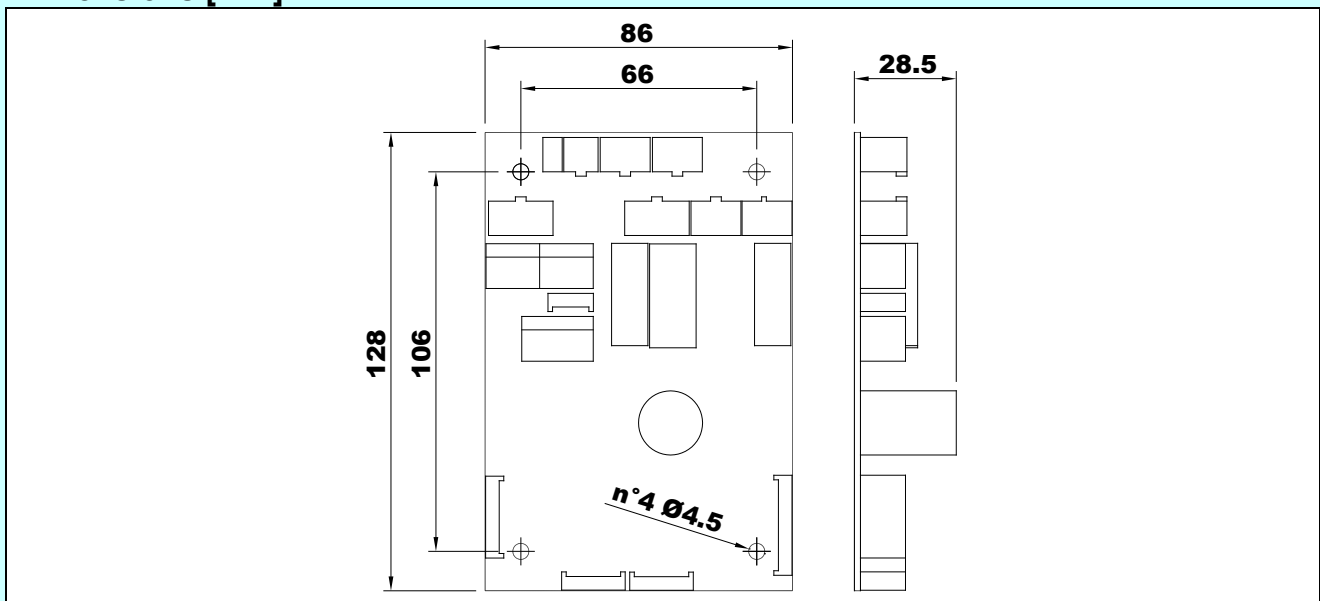
Category 3 (EN 954-1) and PLd (EN 13849-1) according to the following conditions:

- Enabling of double independent channels system with cross check control
- Use of double transducers with doubled wiring harness

### Technical data

Power supply	9 to 33 Vdc	-
Digital inputs	8	-
Analog inputs	four 4 to 20 mA or 0.5 to 4.5 Vdc types or two 4 to 20 mA or 0.5 to 4.5 Vdc types or 1 differential type	Protected against short circuits and operator error
Digital outputs	3 positive	Imax = 1 A. Protected against short circuits
Digital outputs for display	1 negative	For BPE VPM series LED display
Digital power outputs	2 relay	Independent. Imax = 2 A. Protected against short circuit. Category 2 or 3 (EN 954-1)
Operating temperature	-40 to 70 °C	-
Standard protection grade	IP 67	In BPE box size 140x115x60

### Dimensions [mm]



It is prohibited to use this apparatus/accessory until the machine onto which it is mounted has been declared in conformity with the Machine Directive 98/37/EEC.

BPE Electronics Srl should modify technical data without advise

LLD 300 M82 v.1.03 2010