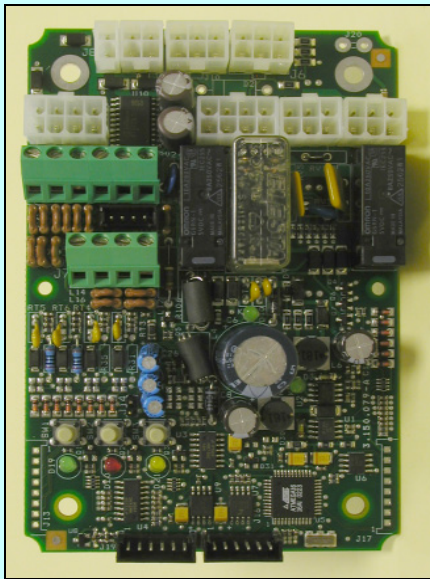


# Basket load control

## LLD 300 M82 Series



### Description

- Used with amplified or not amplified transducers
- Signal processing in **two independent channels with crossed control** (for Category 3 systems only)
- Calibration via push buttons and LEDs on the board or via RS-232 with Psion™/PC
- Check control through LED on board or via RS-232
- Auto reset
- Zero check input
- Self-calibration push button
- Digital outputs for alarm and pre-alarm signaling
- More alarm levels available
- Available for 12/24 Vdc power sources
- Auto test for:
  - short circuit on power outputs
  - transducers open or in short circuit

### On request

- Working states data log
- Special functions

### Safety

*Category 2 (EN 954-1) according to the following conditions:*

- Automatic or manual zero check, function of the custom application

*Category 3 (EN 954-1) and PLd (EN13849-1) according to the following conditions:*

- Enabling of double independent channels system with cross check control
- Use of double transducers with doubled wiring harness

### Technical data

|                             |  |  |
|-----------------------------|--|--|
| Power supply                | 9 to 33 Vdc  | -  |
| Digital inputs              | 8  | -  |
| Analog inputs               | Cat. 2: four 4 to 20 mA or 0.5 to 4.5 Vdc types or two 4 to 20 mA or 0.5 to 4.5 Vdc types or 1 differential type | Protected against short circuits and operator error                                  |
|                             | Cat. 3: four 0.5 to 4.5 V types or 2 differential type   |  |
| Digital outputs             | 3 positive   | Imax = 1 A. Protected against short circuits   |
| Digital outputs for display | 1 negative   | For BPE VPM series LED display   |
| Digital power outputs       | 2 relay  | Independent. Imax = 2 A. Protected against short circuit. Category 2 or 3 (EN 954-1) |
| Operating temperature       | -40 to 70 °C   | -  |
| Standard protection grade   | IP 67  | In BPE box size 140x115x60   |

### Dimensions [mm]

