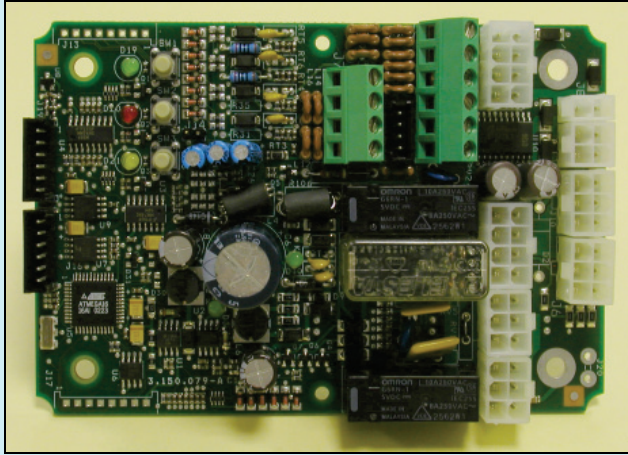




Load sensing for scissor lift platforms

Series LLD 300 M82-Sc



Description

- Used with angle and pressure transducers
- Autolearning of operating curves
- Calibration via push buttons and LEDs on the board or via RS-232 with Psion™/PC
- Available for 12/24 Vdc power sources
- Digital outputs for alarm and pre-alarm signaling
- More alarm levels available
- Check control through LED on board or via RS-232
- Auto test for
 - short circuit on power outputs
 - transducers faults
 - pressure/height ratio out from operating curve

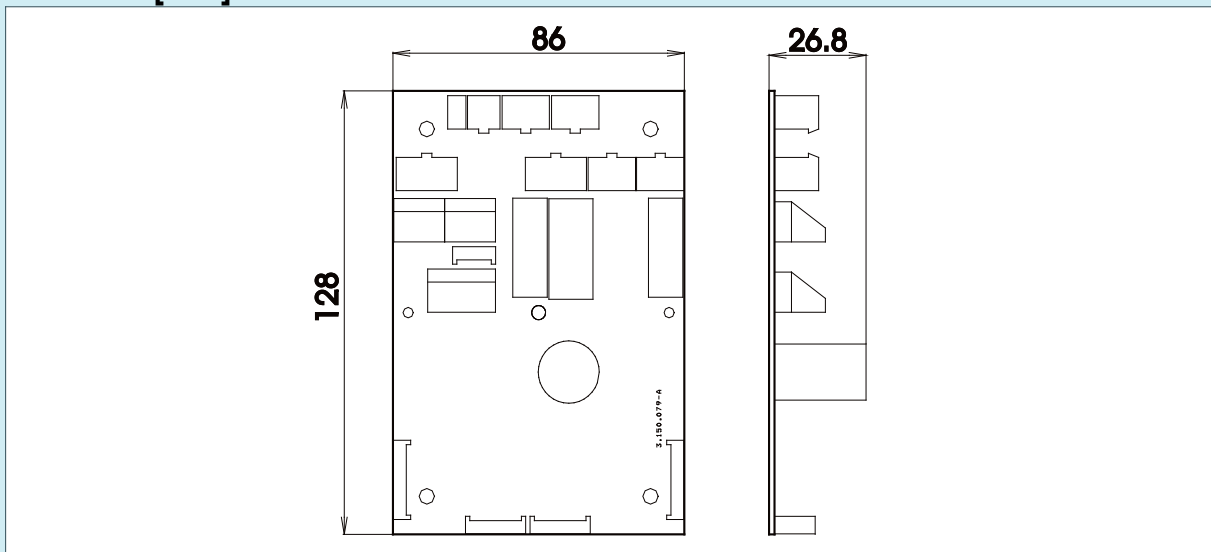
- On request:**
- Working states data log
 - Height limitation
 - Automatic stop with interblock during descent movement
 - Special functions

Safety: Category 2 (EN 954-1). Category 3 (EN 954-1).

Technical data

Power supply	9 to 33 Vdc	-
Digital inputs	8	-
Analog inputs	four 4 to 20 mA or 0.5 to 4.5 Vdc types or two 4 to 20 mA or 0.5 to 4.5 Vdc types or 1 differential type	Protected against short circuits and operator error
Digital outputs	3 positive	Imax = 1 A. Protected against short circuits and overloading.
Digital outputs for display	1 negative	For BPE VPM series LED display
Digital power outputs	2 relay	Independent. Imax = 2 A. Protected against short circuit. Category 2 (EN 954-1).
Operating temperature	-40 to 70 °C	-
Standard protection grade	IP 55	In BPE box size 140x115x60.

Dimensions [mm]



It is prohibited to use this apparatus/accessory until the machine onto which it is mounted has been declared in conformity with the Machine Directive 98/37/EEC.

BPE Electronics Srl should modify technical datas without advise

LLD 300 M82-Sc v.1.05 2009