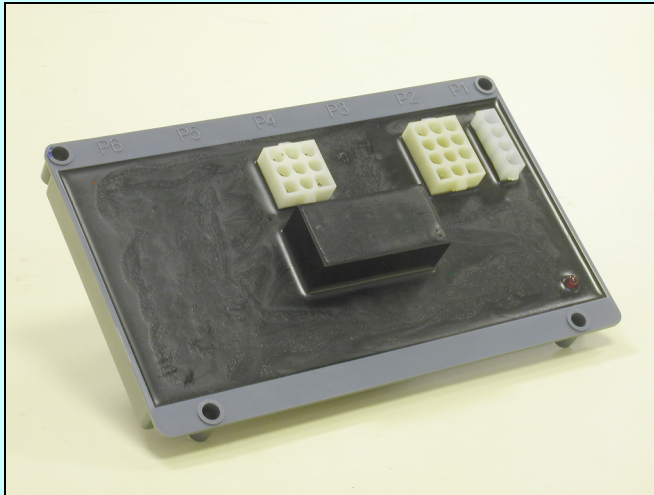




# Auto-leveling outriggers electronic board

## GP106/121 series



### Description

- Integrated tilt device
- Available for 12/24 Vdc power sources
- Calibration and Configuration through EZcal programmer or via RS232 serial port
- Two digital outputs to show when all the outriggers reach the ground and when the machine is levelled

### Options:

- Safety output if not all the outriggers keep the contact with the ground

### Self detection of:

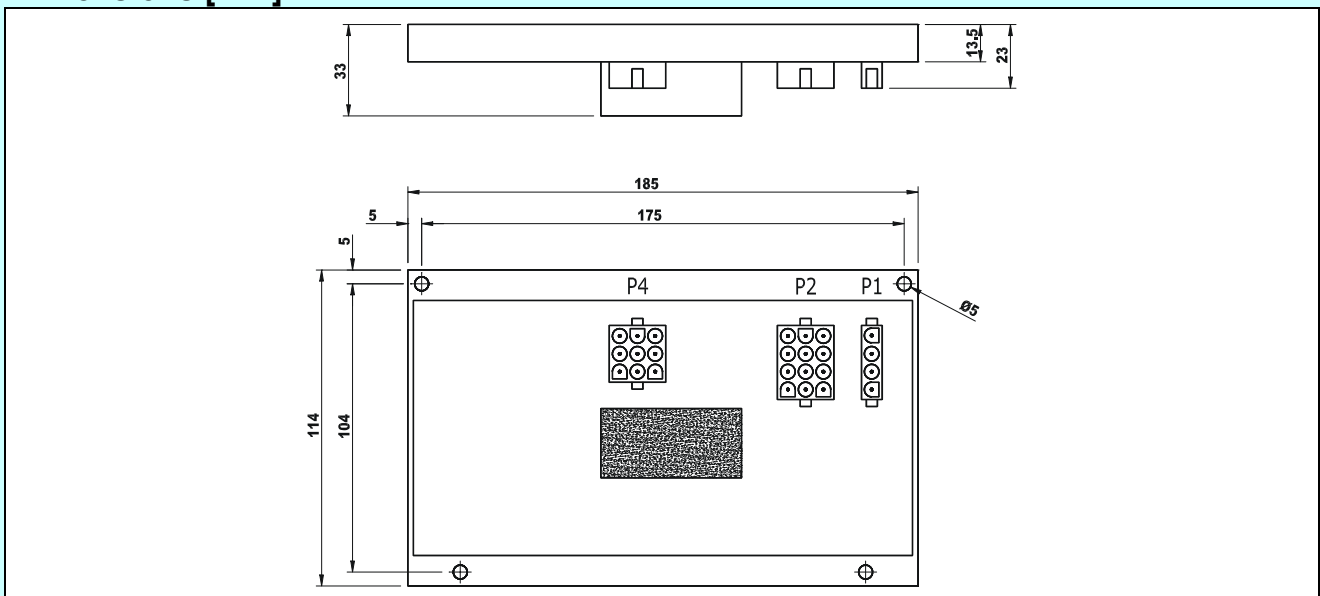
- Short-circuit on power outputs
- Broken, blocked or in short-circuit transducers
- Pressure/heigh factor different from stored diagram

- Optional:**
- Work parameters storing
  - Heigh limitation function
  - Self stop during descent (safety block)
  - Special functions

### Technical Data

|                       |                                |   |
|-----------------------|--------------------------------|---|
| Power supply          | 8.5÷32 Vdc                     | -   |
| Digital inputs        | From 6 to 10                   | 125kΩ impedance                                       |
| Digital Power outputs | 8 positive with positive logic | Imax=2,5 A. Protected from short circuit and overload |
| Digital outputs       | 2                              | -   |
| Integral tilt sensor  | from 0° to 10°                 | -   |
| Working temperature   | -40÷60 °C                      | -   |
| Water proof           | IP 67                          | Completely in resin                                   |

### Dimensions [mm]



It is prohibited to use this apparatus/accessory until the machine onto which it is mounted has been declared in conformity with the Machine Directive 98/37/EEC.

BPE Electronics Srl should modify technical datas without advise

GP106/121 v.1.00 2006